

# EWSN'24 Sustainability Competition

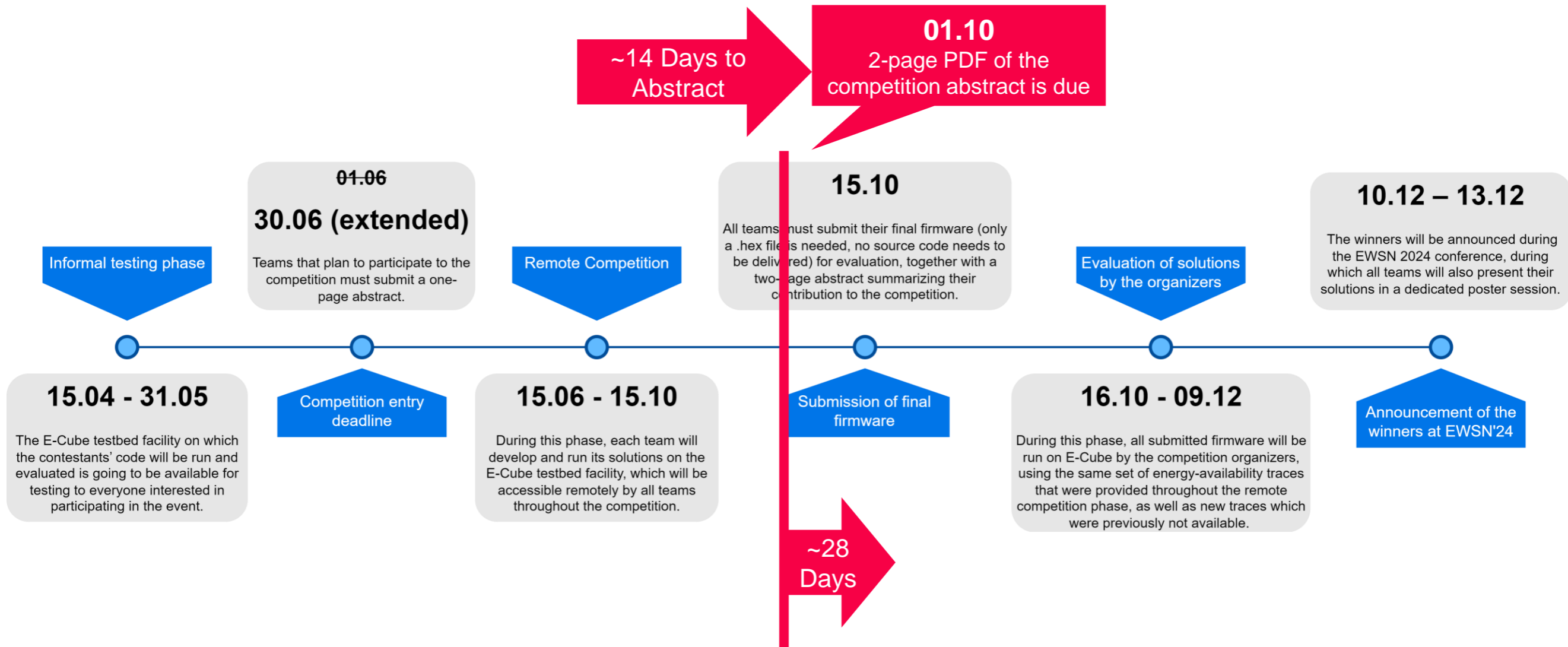
## Community Meetup

Dr. Markus Schuß

Low-power Embedded Networked Systems (LENS) group  
Graz University of Technology, Austria

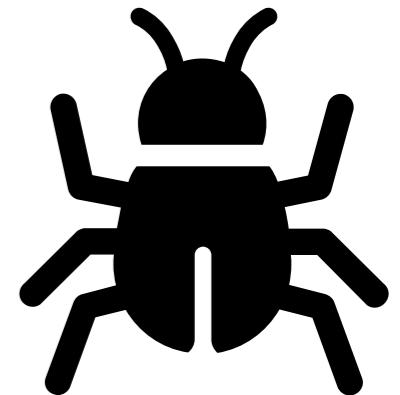
17.09.2024

# Timeline and Important Dates



# uSMU Accuracy/Timing

- Timing for very fast Energy Traces **is** off
  - Update rate slightly too high (uSMU drops samples)
  - Super Capacitor traces will change (will notify via Discord)
  - Finishing validation



# Contacts

- E-Cube is being improved and upgraded on-the-go!
- We look forward to interact with you!
- Questions? Feedback?
  - <https://discord.gg/baBP2GbUvb>  
Feel free to hang out and exchange ideas!
  - [markus.schuss@tugraz.at](mailto:markus.schuss@tugraz.at)
- Other general inquiries?
  - [ecube@iti.tugraz.at](mailto:ecube@iti.tugraz.at)

