

EWSN'24 Sustainability Competition

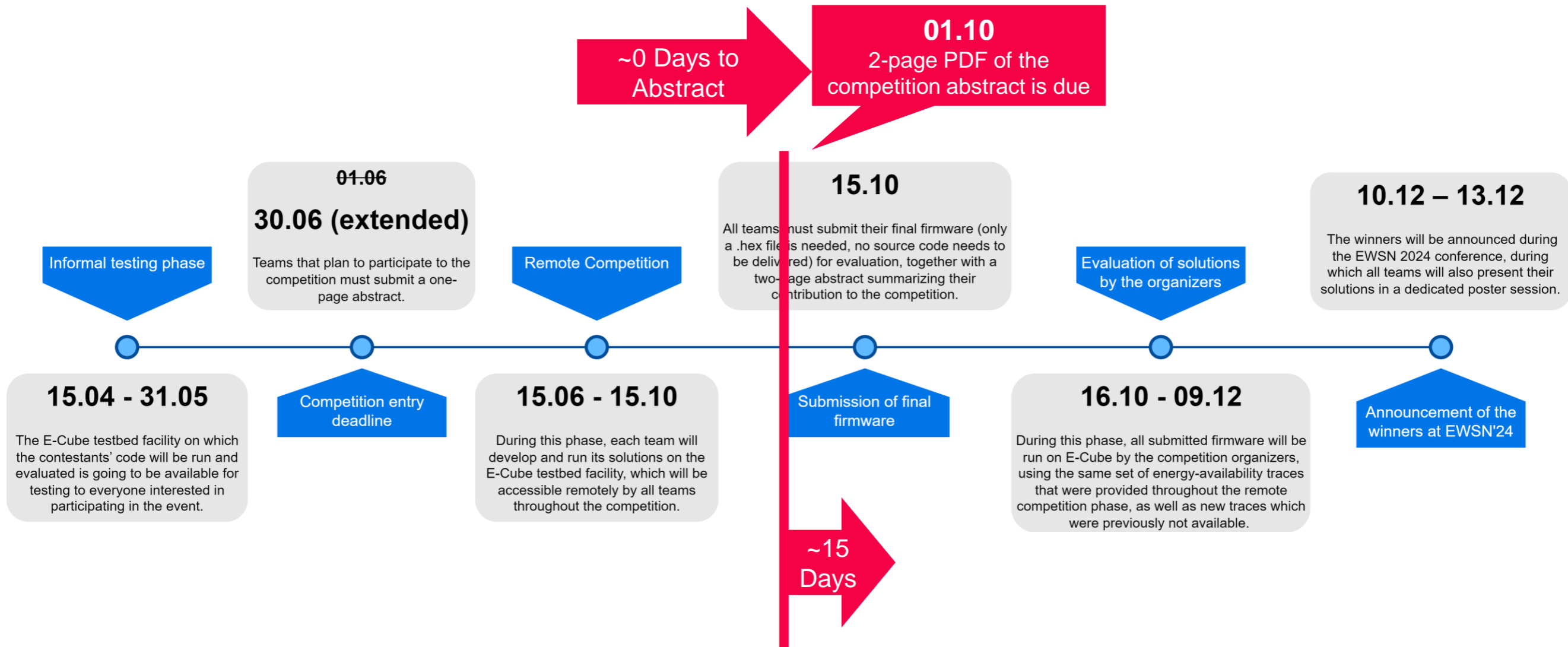
Community Meetup

Dr. Markus Schuß

Low-power Embedded Networked Systems (LENS) group
Graz University of Technology, Austria

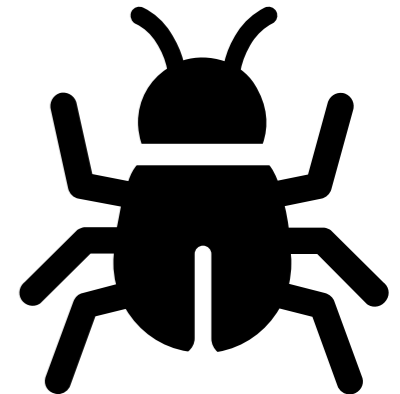
01.10.2024

Timeline and Important Dates



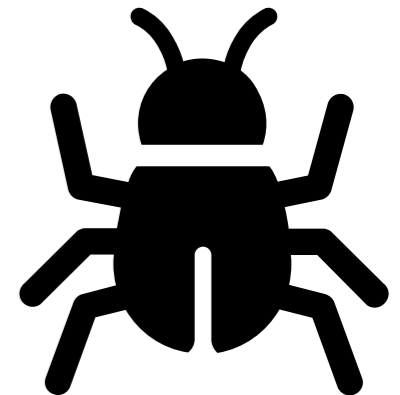
Emergency fix

- After programming, `mspdebug` does not hold the device in reset
 - The FRAM is only prepared afterwards, the could mess up the state
 - However, this also means existing solutions were still in FRAM
- The FRAM is now disconnected during programming, your solution should handle the start **without** FRAM accordingly



uSMU Accuracy/Timing

- Timing for very fast Energy Traces **was** off
 - All existing traces have been replaced (no experiments were rerun)
 - Starting with any experiment with an ID>3304 (or today 14:50GMT+2) uses the **updated traces** (samples are every 30ms instead of 25ms)
- Calibration for the current is still slightly off, with the “hot” phase right now, does it make sense to recalibrate? (LPM4 is 6 μ A according to the PPK2, not 203 μ A)



Contacts

- E-Cube is being improved and upgraded on-the-go!
- We look forward to interact with you!
- Questions? Feedback?
 - <https://discord.gg/baBP2GbUvb>
Feel free to hang out and exchange ideas!
 - markus.schuss@tugraz.at
- Other general inquiries?
 - ecube@iti.tugraz.at

